

NetworkedPlanet

Networked Information - Networked Knowledge

TMCore SharePoint Module

The TMCore SharePoint Module enables content in a Microsoft SharePoint™ portal to be 'tagged' or classified against a knowledge model which conforms to a custom ontology. By breaking out of the hierarchical form of standard classification tools, users can organise documents and other portal content in the way that they think and the SharePoint portal can become a place to share knowledge as well as content.

Key Features

- Portal-wide information and knowledge management.
- Break out of the hierarchy of SharePoint sites to navigate and search based on classification.
- Search knowledge not content – users can search the knowledge model to better find relevant information.
- Capture knowledge by allowing users to create a map of the subjects in their domain of expertise.
- Easy to use – classification information appears to users as ordinary SharePoint item meta data.
- Classify any portal content – documents, tasks, contacts and any other SharePoint objects can be classified.
- Ontology-driven classification with a simple forms-based UI.
- Immediate feedback – classification creates links between related items immediately.
- Flexibility – ontology changes can be made quickly and easily with no impact on the running system.
- Extensibility – TMCore provides an extension point for integration of other external information sources.

Overview

Microsoft SharePoint provides a scalable solution to organisation-wide content management and collaboration. However, as the size of a portal increases it becomes increasingly difficult for users to navigate



and search the portal to find content relevant to the task at hand.

The TMCore SharePoint Module is an integration of NetworkedPlanet's TMCore information management server with Microsoft SharePoint. The module enables user-driven classification and organisation of content in a SharePoint portal. The classification information for the entire portal is managed in one place, enabling users to easily find content wherever it resides on the portal.

The classification system is based on the ISO standard Topic Maps which defines a knowledge structure as a set of topics connected together by strongly-typed relationships called associations. In the TMCore SharePoint Module, any piece of portal content that is classified by a user is stored as a topic, and so it can be connected by an association to any other related portal content or to topics that represent subjects that have no direct content representation such as projects, products, customers, skills and locations.

TMCore SharePoint Module

Classify Content And Build A Knowledge-base

Through a simple forms-based interface a user can specify what a SharePoint item represents and how it relates to other items in SharePoint and to topics that represent other concepts such as projects, skills and locations.

Users can also be granted the ability to create their own concept topics and connect them to each other - enabling them to organise content in the way that best meets their needs, and matches the way that they think and work. Organizations may choose to enforce their own controlled pick lists or to extend the topic creation ability to users and so enable the SharePoint portal to become a knowledge bank as well as a content store and collaboration space.

Ontology Definition And Update

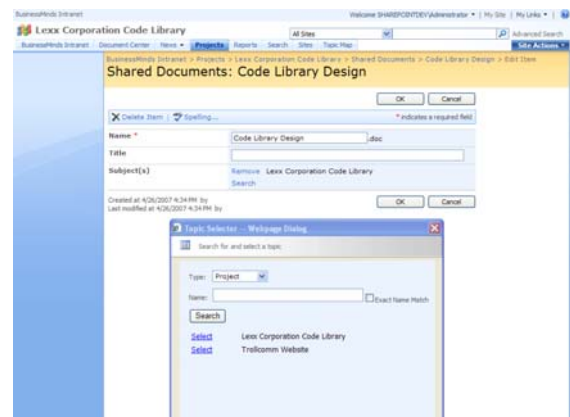
The TMCore SharePoint Module is driven by an ontology that is stored in the same repository that holds the knowledge structures and classification information entered by users. The ontology constrains the types of topics and the types of relationships between topics that users can create through the SharePoint interface. The ontology is stored as data and not as a set of database schemas. This means that any modification to the ontology can be immediately reflected in the portal without any need to re-compile code, migrate existing data, or perform administrative tasks on the database.

Presentation Web Parts

The TMCore SharePoint Module provides a suite of presentational web parts including query web parts that can provide context-sensitive, personalized links; the Faceted Search web part (shown overleaf); and an integration with the standard SharePoint portal search engine allowing users to simultaneously search concepts and content.

Making Classification Easy

We believe that content is best classified by the users who produce it and who work with it and that user insight is more important than machine-based content classification. Our goal with the TMCore SharePoint module is to make it as easy as possible to elicit classification information from users and to make the benefits of classification act as a driver to get users to think about the meta data they provide and the way that they connect documents to a wider knowledge structure.



Integration and Extensibility

The TMCore SharePoint Module has been developed to provide useful information and knowledge management features out-of-the-box. For organisations with more complex requirements, the product provides a Web Services interface, complete managed-code API and documented SQL Server database schemas for extension and integration.

Availability and Technical Requirements

TMCore SharePoint Module version 3.0 requires Microsoft Office SharePoint Server (MOSS) 2007 and SQL Server 2005 or later.

For further information including current pricing, please contact us using the details below.

Networked Planet Limited • Oxford Innovation Centre • Mill St, Oxford, OX2 0JX

www.networkedplanet.com • contact@networkedplanet.com • Phone +44 (0) 1865 811131